

2.. Rowan Drive, Verwood, BH31 6DG

£500,000

- Chain free sale
- Sought after corner plot
- 26 ft Lounge
- Detached garage and driveway
- Detached bungalow
- Approx. 1,656 sq ft including garage
- Conservatory overlooking garden
- Scope to modernise and add value

THE PROPERTY

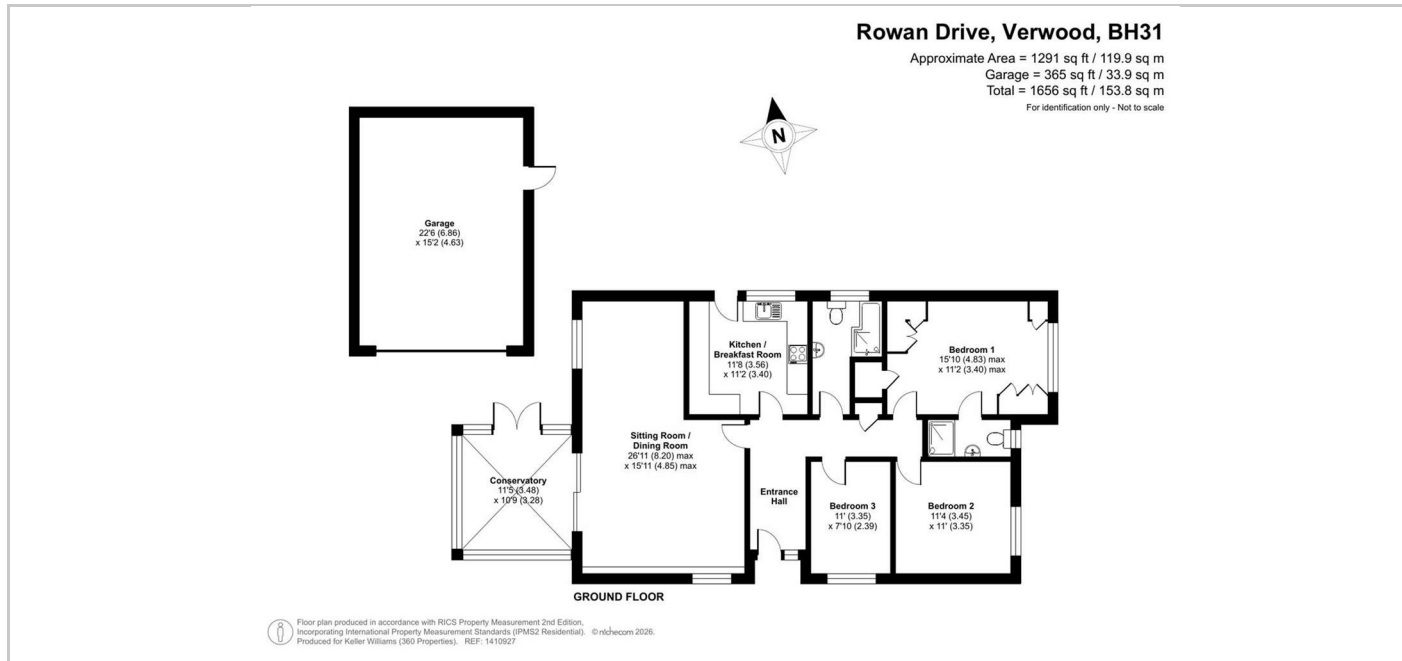
Nestled in the charming area of Rowan Drive, Verwood, this impressive three-bedroom detached bungalow offers plenty of potential. Set on a generous corner plot, the property boasts a spacious living and dining room that flows seamlessly into a delightful conservatory, creating an inviting space for relaxation and entertaining.

The bungalow features three well-proportioned and bright bedrooms, each designed to provide a tranquil retreat. The master bedroom benefits from an en suite bathroom with a further two other bedrooms.

Outside, the property is complemented by a wrap-around garden, providing a wonderful outdoor space for gardening enthusiasts or families looking to enjoy the fresh air. The garden also presents exciting potential for extension, allowing you to tailor the home to your specific needs.

For those with vehicles, the property includes a double garage and off-road parking, ensuring convenience and security. This bungalow is not just a home; it is a canvas for your future aspirations. With its prime location and versatile living spaces, this property is a rare find in Verwood. Don't miss the opportunity to make this delightful bungalow your own.

SITUATION



Directions

Market House Market Sq, Aylesbury, HP1201TN

Tel: 01296 767555 Email: francis@360-properties.co.uk <https://www.360-properties.co.uk>